

Lunar Lander Strut Installation and Alignment

Faculty Advisor: Junlan Wang | Industry Sponsor: Blue Origin Department of Mechanical Engineering, University of Washington



INTRODUCTION/MOTIVATION

- The Blue Origin MK2 Lunar Lander is made up of distinct modules mechanically connected with struts that need to be adjusted and set to correct lengths
- Aim to validate a process in which strut length can be correctly measured and installed to the MK2 Lunar Lander mockup
- A successful, and repeatable process is needed to improve efficiency in assembly process

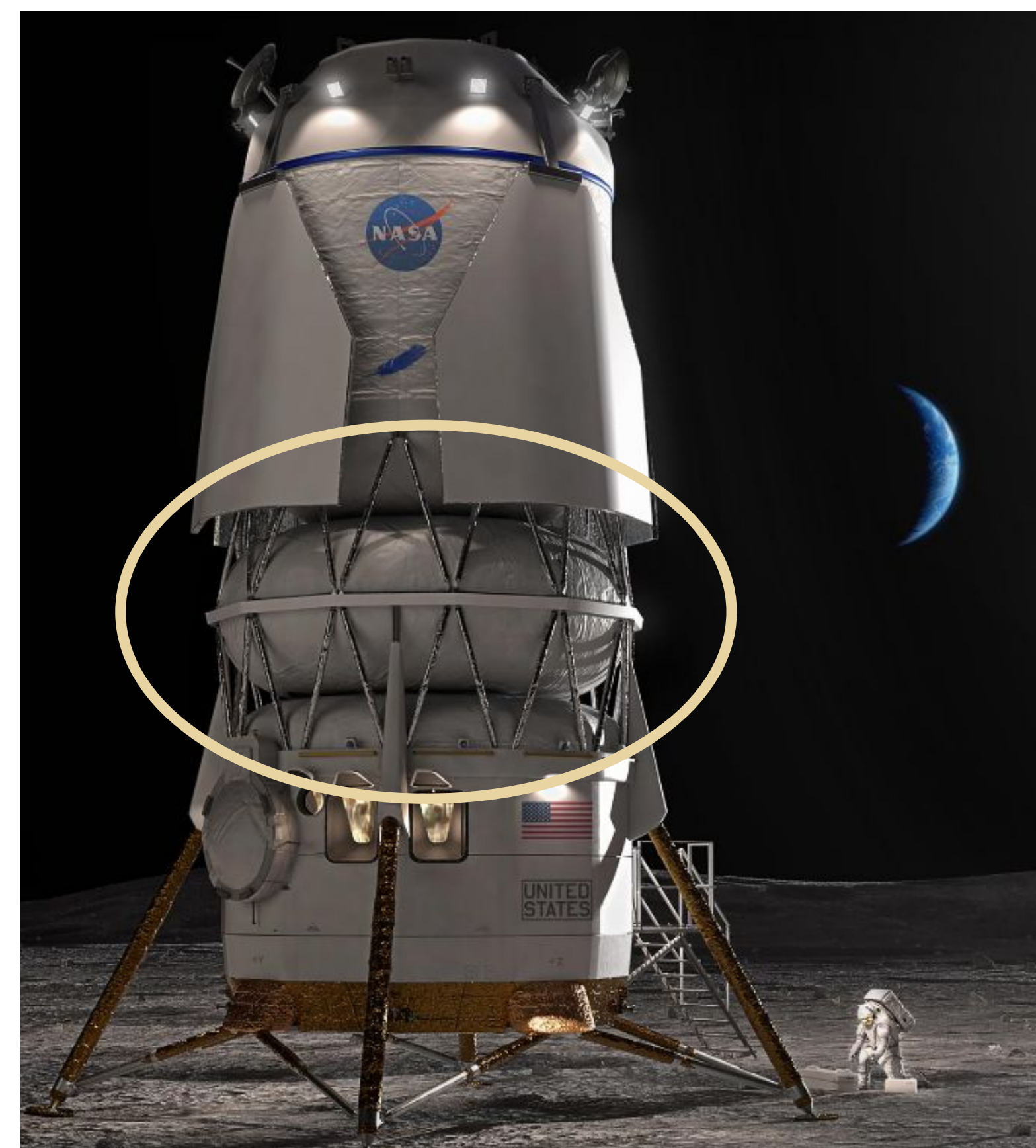


Fig.1. Rendering of the MK2 Lunar Lander with the struts outlined . [1]

PROBLEM STATEMENT

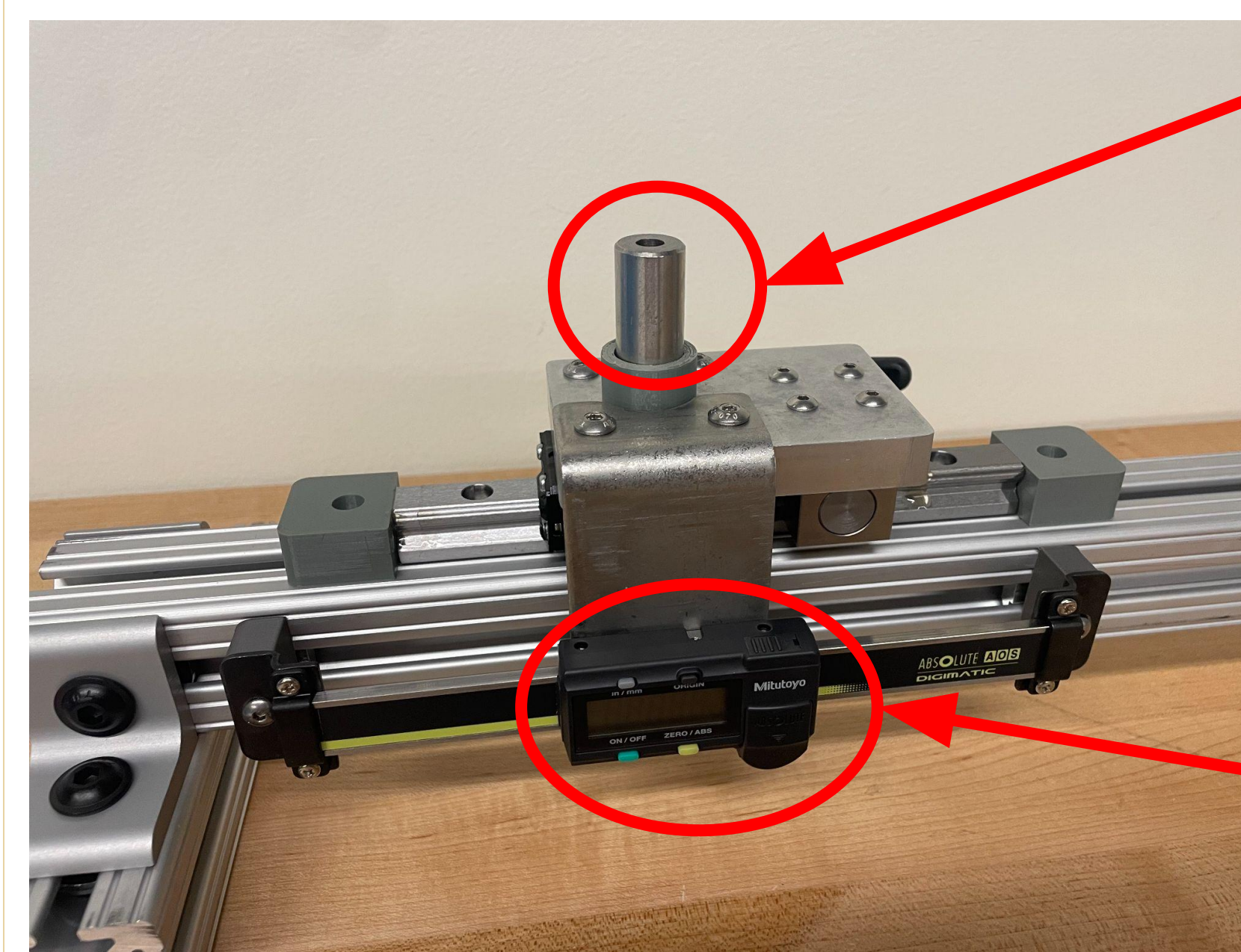
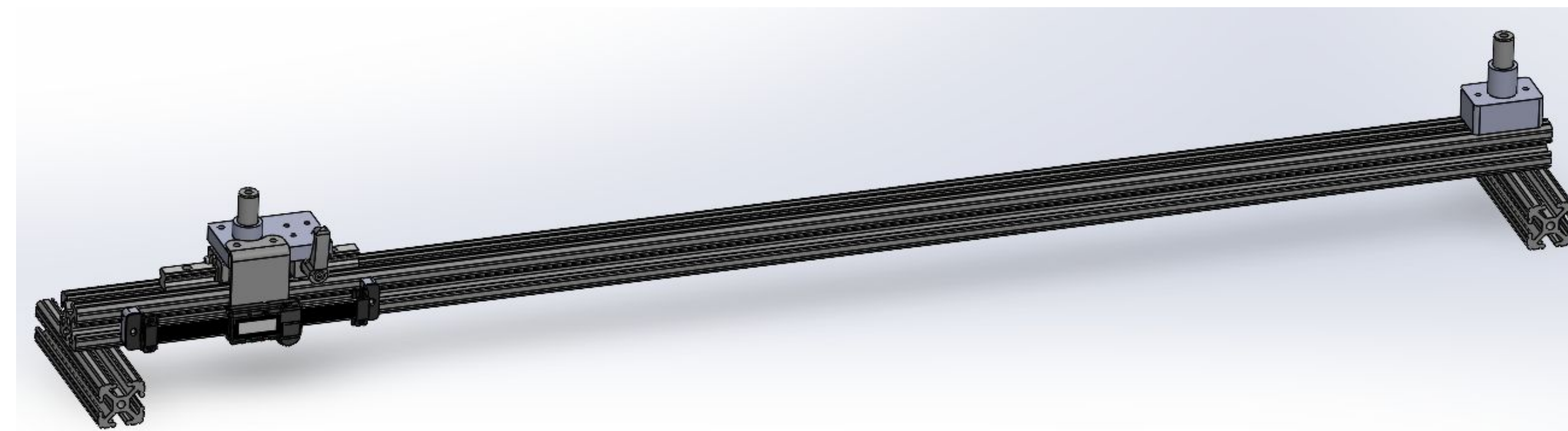
Blue origin needs a repeatable and efficient and process to join the spacecraft modules with adjustable structural struts.

REQUIREMENTS

- Prototype tool that is highly accurate
- Verify tool's functionality and accuracy:
 - Use the Leica (highly accurate laser tracker) to measure and calculate baseline lengths of struts
 - Adjust struts to baseline lengths using the tool
 - Verify that the holes on the sturt ends and clevis mounts align properly without the use of excess force

DESIGN & TEST PROCESS

TOOL DESIGN/PROTOTYPE



SMR (Spherically Mounted Retroreflector) Placement
-SMR: tool used for Leica to track measurement
-Calibrated using Leica

Linear scale (digital read-out, DRO) +/- 0.0005 accuracy

- T-slotted frames used for the bulk of the tool
- One fixed end (top image: right side of tool) and one free-end (top/bottom image: left side of tool) for placement/adjustment of mock-up strut
- Slider on the free end attached to electronic measuring tool to measure length of strut
- Hand brake attached on the free end to stop movement after correct length of strut is met

TEST PROCESS

- Leica was used to record each data point in 3D space
- Data points processed in SolidWorks for 3D viewing
- Required strut length measured in SolidWorks
- Tool used to set each strut to its required length
- Installed struts clockwise onto the mockup

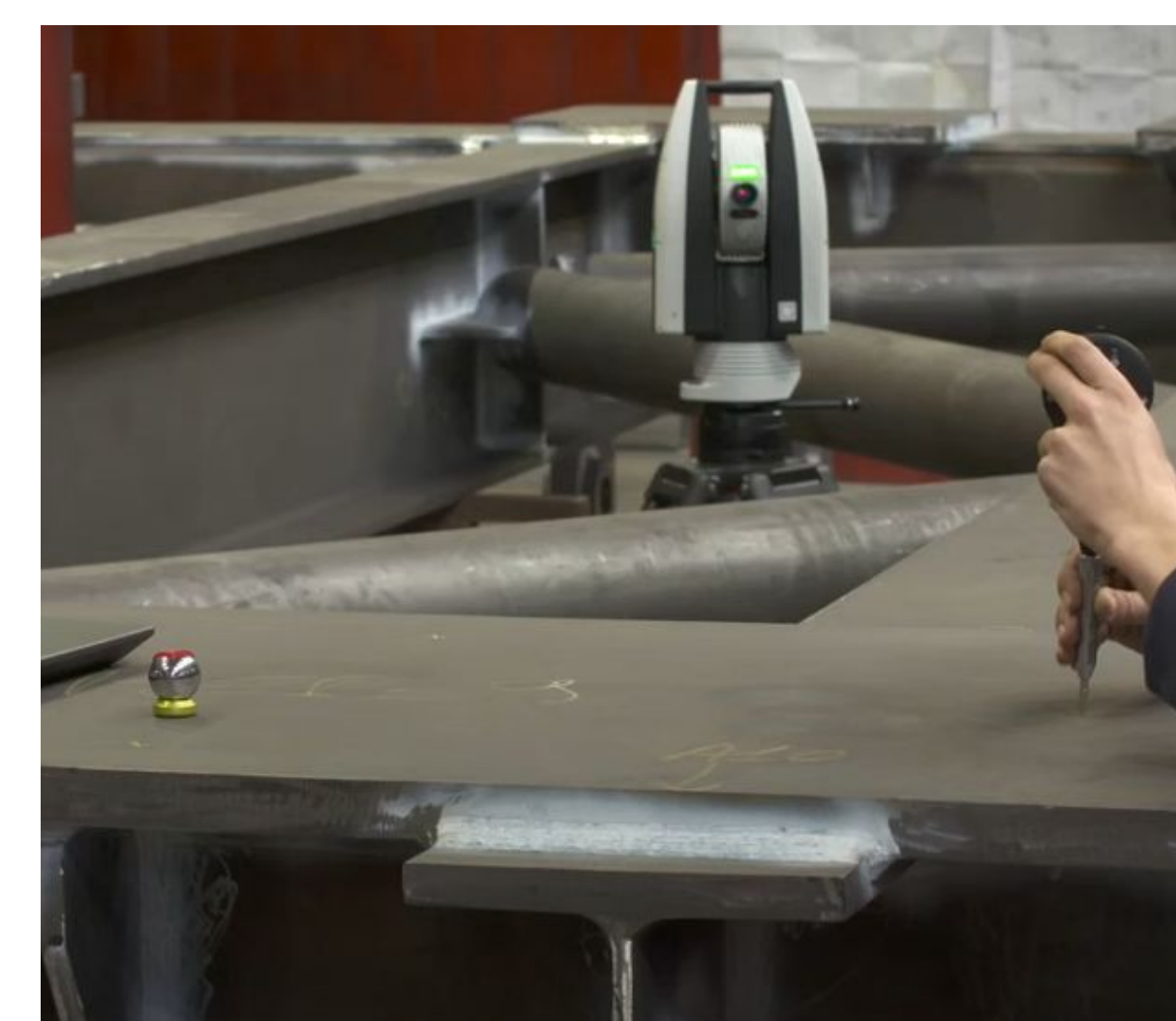
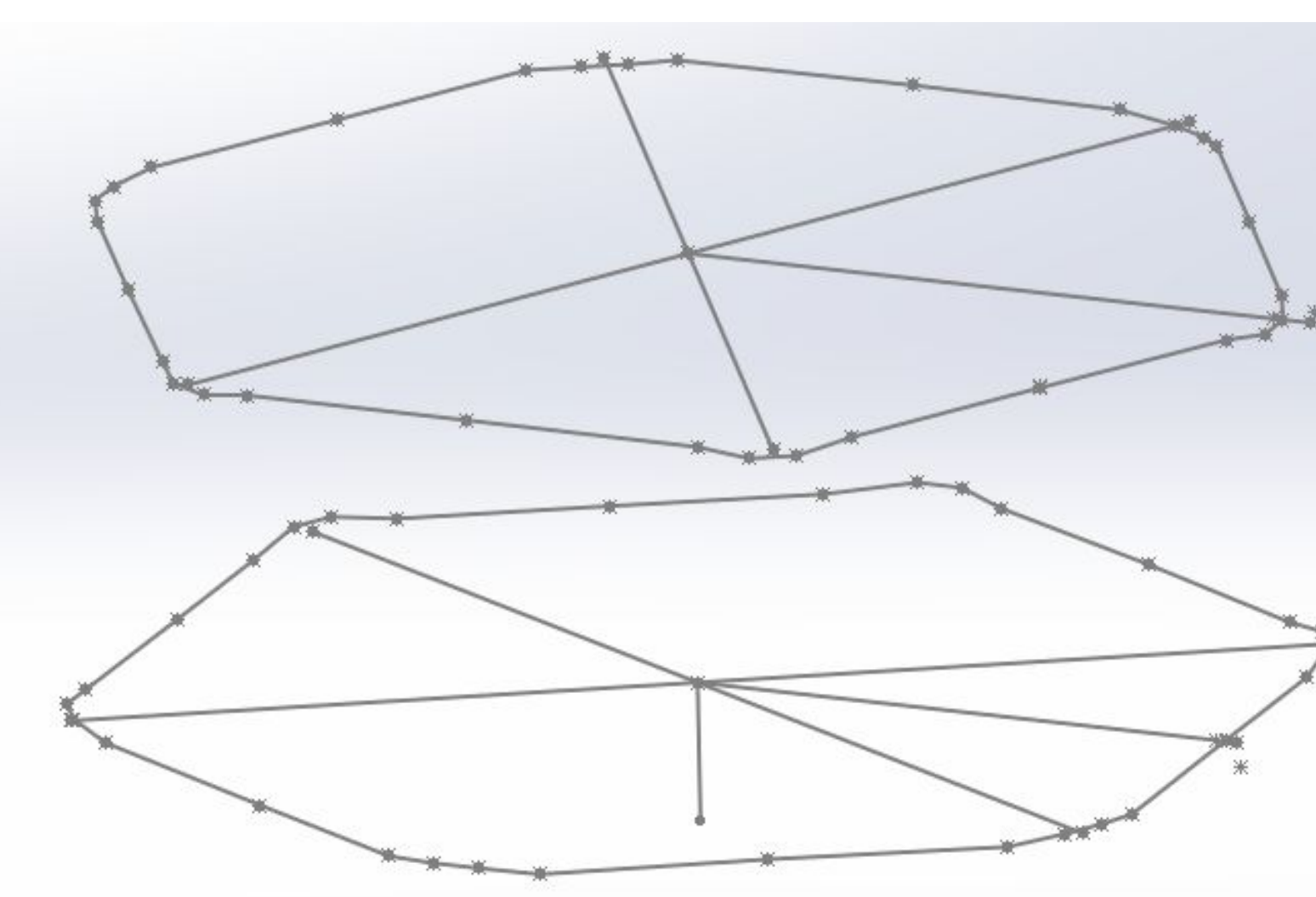
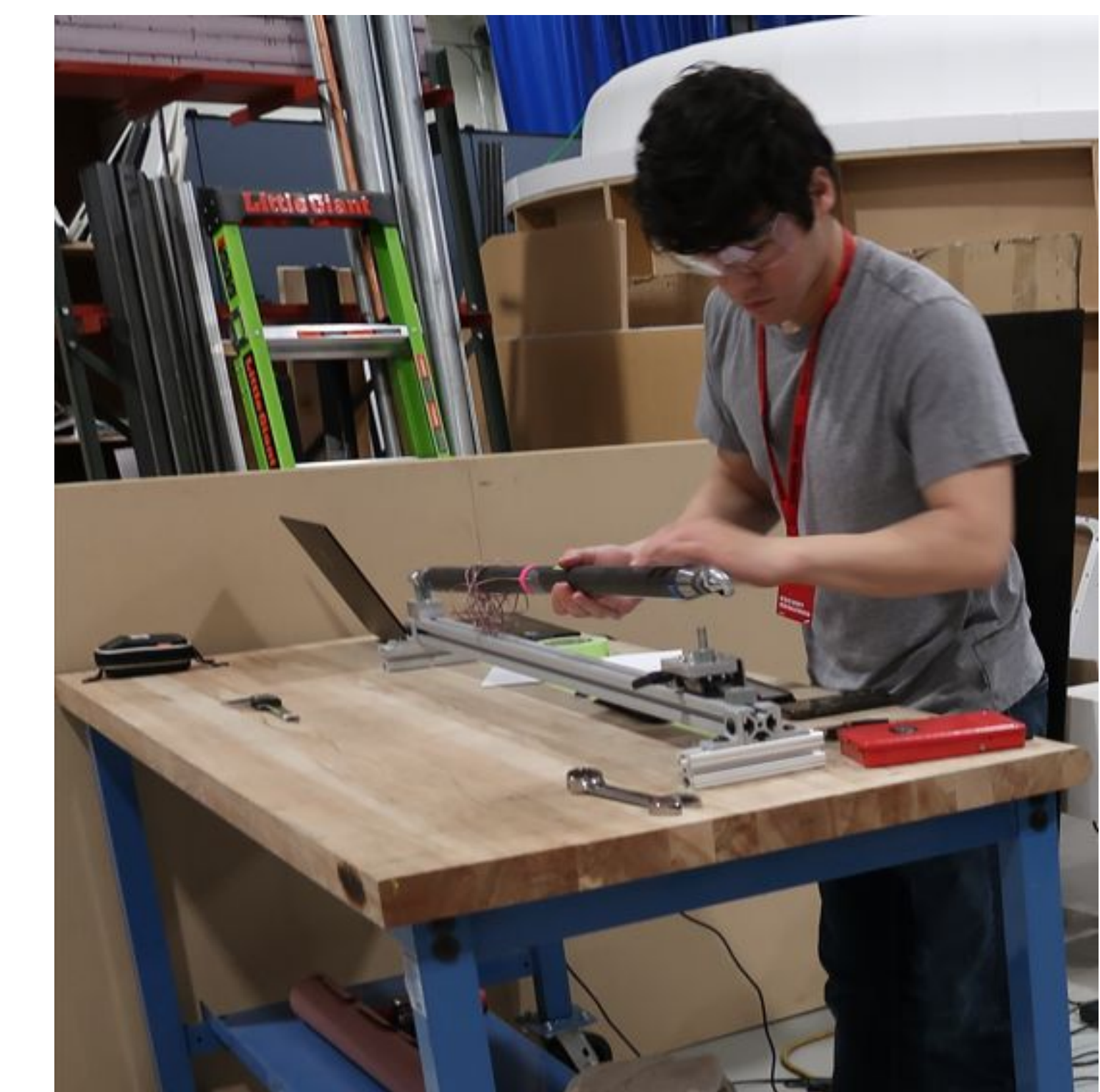


Fig.2. Leica Absolute Tracker AT500. [2]



RESULTS/VALIDATION

- Expectations: the tool is able to set struts to specific lengths and no extra tools are needed (i.e. hammer) to install struts
- No issue of readjusting the strut lengths during installation process
- Leveraging forces were not required to install struts (pounding struts into pins of mockup was not needed)



CONCLUSION & FUTURE WORK

- Successfully created a tool to accurately measure the as-built strut lengths.
- Successfully made a mockup spacecraft mate system and performed the process
- Next step: ensure the process is repeatable and accurate.
 - Blue Origin will repeat the process multiple times to make sure data is accurate
- Include a calibration for each strut before installation
- Add more features to the tool such as a fine adjustment knob to increase accuracy

Acknowledgements

Special thanks to Laurel Rhoades, Andrew Hanley, Rick Griswold, Mike Brown, Jade Hudson, Walter Fruge, and Kevin Hunt from Blue Origin for the technical mentorship, Professor Junlan Wang and Professor Eli Patten for the faculty guidance, Eamon McQuaide and Veasna Thon for the machining support, and Bill Kuykendall for the test support.

Mechanical Engineering Capstone Exposition
May 29th 2024, Husky Union Building, University of Washington, Seattle